

MARD / SAFE SYSTEM

THE SAFE MARD COMES IN 2 ITERATIONS

- EVO (2017-2024) RSL WITH RING, RIPCORDER WITH PIN
- EVO2 & EVO TD (2025 UPWARDS) RSL WITH PIN, RIPCORDER WITH MARINE EYE

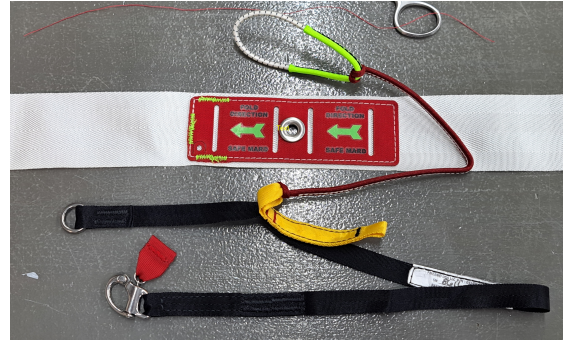
THE RETENTION BUNGEE (4MM ELASTIC WITH NEON GREEN SHEETING) HAS TO BE REPLACED IF, AFTER A DEPLOYMENT, THERE IS DAMAGE TO THE BUNGEE OR ONE OF THE STITCHES ON THE SHEETING IS BROKEN. EVERY EVO COMES WITH 3 BUNGEE'S. SPARE BUNGEE CAN BE ORDERED THROUGH ORDER@FLYFIREBIRD.COM

SAFE/MARD INSTALLATION - STEP BY STEP MATERIALS, PARTS & TOOLS NEEDED

- * HEMOSTAT
- * SAFETY SEAL THREAD
- * RSL MARD LANYARD
- * MARD BUNGEE LOOP

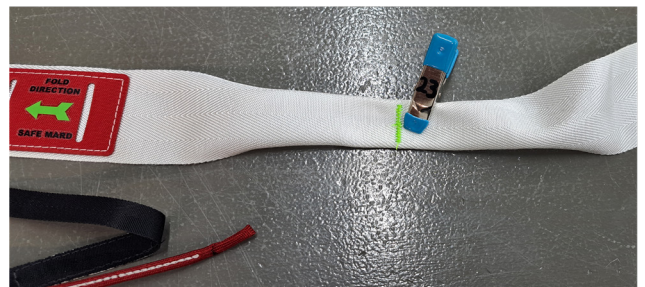
ASSEMBLY & PACKING

- 1.FOLD BRIDLE AT GREEN MARKING (BARTACK) & INSERT 10" (25CM) OF SAFETY THREAD.
- 2.INSERT MARD BUNGEE THROUGH THE GROMMET-FROM THE BOTTOM
- 3.INSERT HEMOSTAT THROUGH ALL 2 CHANNELS AND MARD BUNGEE INTO THE OPPOSITE DIRECTION OF THE ARROWS.
- 4.TRIPLE FOLD THE BRIDLE INTO A TIP AT THE GREEN MARKING
- 5.GRAB TRIPLE FOLDED BRIDLE TIP WITH HEMOSTAT AND PULL TROUGH ALL CHANNELS AND MARD BUNGEE.



EVO

EVO2
EVO TD

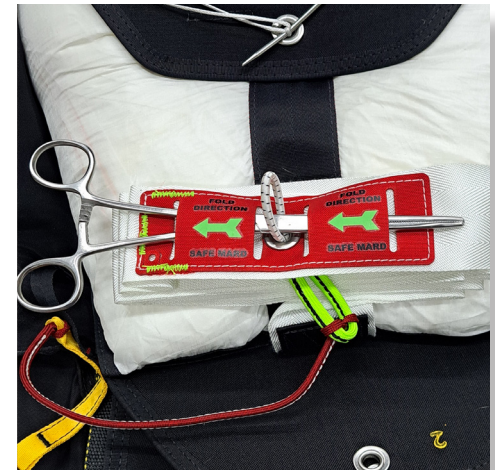
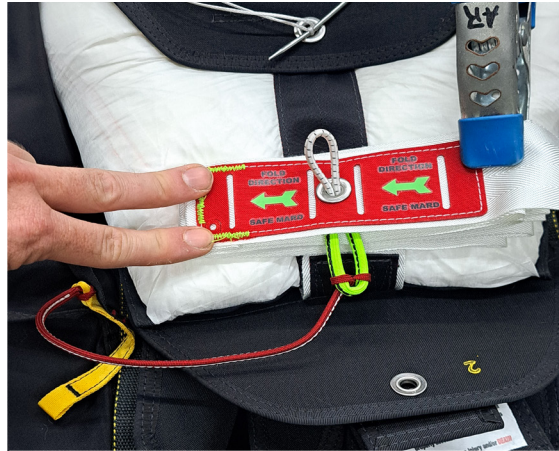


7.ALIGN GREEN TIP WITH GREEN MARKING ON THE SIDES OF THE SAFE / MARD.

8.INSERT HEMOSTAT THROUGH SPECTRA LOOP TO EASE THE INSERTION OF THE SAFETY THREAD.

9.INSERT SAFETY THREAD THOUGH SPECTRA LOOP AND SECURE WITH A SURGEON & LOCK KNOT.

10.FYI : THIS WILL ENSURE THAT THE TIP WILL NOT BE DISENGAGED



11. SAFE MARD READY TO INSTALL (YELLOW RSL LANYARD ONLY TO SHOW DIFFERENCE BETWEEN SAFE MARD LANYARD)

12. CLOSE FLAP #1 FOLD BRIDLE UNTIL SAFE / MARD IS IN POSITION UNDER FLAP # 2

13.THEN CLOSE FLAP #2

14. AFTER FLAP #2 IS CLOSED, MAKE SURE SAFE MARD AND FOLDS ARE IN PLACE.

